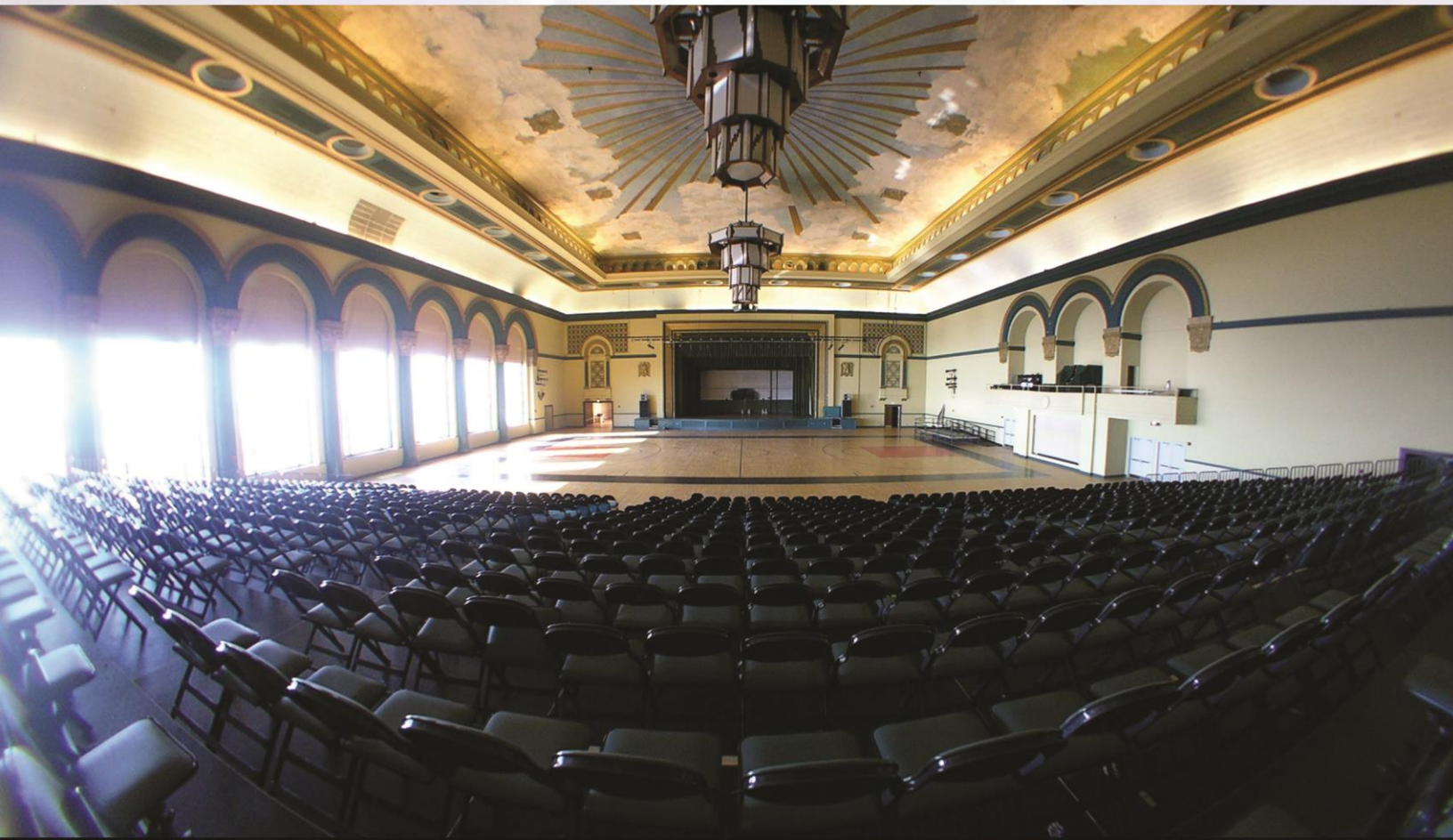


Boardwalk Hall

YOUR BEST SEAT AT THE SHORE

ADRIAN PHILLIPS BALLROOM



SPECTRA
BY COMCAST SPECTACOR

ADRIAN PHILLIPS BALLROOM INFORMATION AND SPECS



The Adrian Phillips Ballroom is located on the concourse level of Boardwalk Hall and can stretch upwards to 17,800 square feet of functional event space. The Ballroom features a distinct house stage with a 48' proscenium opening and an open air loggia which overlooks the famous Atlantic City boardwalk. The Ballroom is capable of accommodating a variety of events with capacities ranging from 1,000 for catered functions up to 3,000 for concerts and boxing events.

BALLROOM PRODUCTION INFORMATION

Meeting Rooms

- Room 320 – 41' x 65' (Miss. Avenue)
- Room 321 – 42' x 58' (Miss. Avenue)

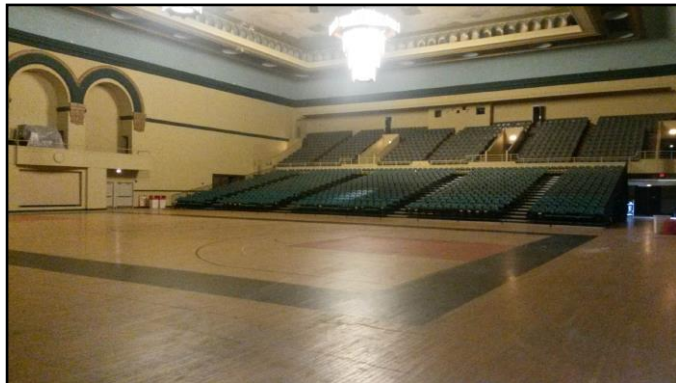
Dressing/Production Offices/Back of House Rooms

Backstage Rooms (Event Level)

- Room 208 – 24' x 13'
- Room 209 – 22' x 27'
- Room 210 – 22' x 39'

Backstage (2nd Level) w/(2) private bathrooms

- BH 1 – 13' x 20'
- BH 2 – 13' x 8'
- BH 3 – 13' x 8'
- BH 4 – 13' x 8'



Electrical Power

The house stage is equipped with 800 amps of 208/3 phase power stage right and stage left.

Location	Number	Amp	Phase	Voltage	Connection
Stage Right	1	100	3	208	Wire tails disconnect

Stage Right	1	400	3	208	Wire tails disconnect
Stage Left	1	400	3	208	Wire tails disconnect
Stage Left	1	200	3	208	Wire tails disconnect
Stage Left	1	100	3	208	Wire tails disconnect
Stage Left	8	60	3	208	4 wire twist lock hub
Stage Left	1	20	1	120	Duplex Outlet

Freight Elevators

Mississippi Avenue (East)

- Southeast Freight – 11'8" x 11'8" x 9'4" – 10,000lb capacity

Georgia Avenue (West)

- Southwest Freight – 11'8" x 11'8" x 9'4" – 10,000lb capacity

Audio Systems

The ballroom audio system was recently upgraded with professional JBL gear for rider friendly operations. The state of the art arrays are complimented by fresh subwoofers, stage monitors, mic kits, and a new front fill system. A Yamaha LS9 console is conveniently located in the organ balcony for control and all speaker and amplifier systems are compatible with Performance Manager Sound system software.

Below is a listing of the new sound equipment available inside the ballroom.

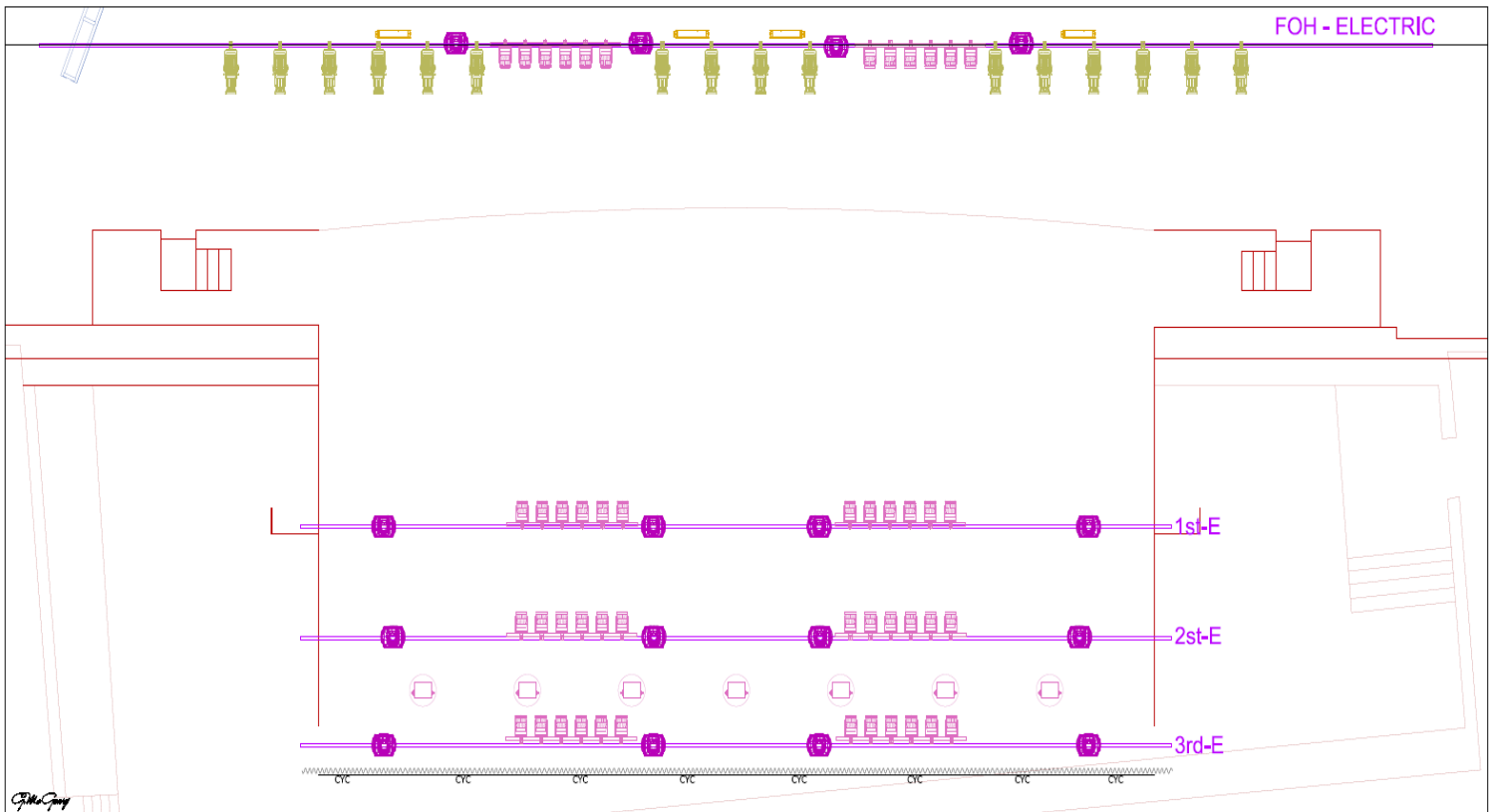
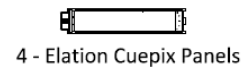
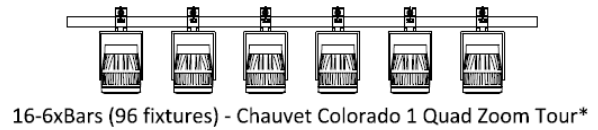
QTY	Model	Description	Location
20	JBL VTX-V25	Large Format Line Array	SR & SL (Rigged)
6	JBL VT4886	Small Format Line Array	Center Cluster (Rigged)
8	JBL VTX-G28	Dual 18" Subwoofers	Groundstacked
6	JBL AC18/26	Compact 8 inch two-way speaker system	Stage Fills
4	JBL VTX-F12	F-Serie Monitor two-way 12" woofer	Stage Monitors
2	JBL VTX-F18S	F-Serie Single 18" Subwoofer	Stage Monitors

Lighting Systems

Likewise, a new lighting package was installed in the ballroom for rider acceptable conditions. The LED fixtures provide concert level lighting and can easily support lighting effects supplied by promoters. The house control console is an AVO Pearl 2008 w/ four (4) DMX universes – a visiting console can output ARTNET or DMX into the console.

Fixtures:

- (48) – Chauvet Colorado 1 Quad Zoom Tour
- (20) – Martin Rush MH1+ Moving Head Profile spots
- (16) – Altman Phoenix RGBW LED ellipsoidal spotlights
- (7) – Spectra CYC RGBA (uplights)
- (4) – Elation Cuepix Panels



Video Systems

The Ballroom possess a 40'w x 20'h video screen rigged inside the proscenium. Front projection is sourced from the projectors booth above the balcony seating. Throw is 185' from downstage center.



Seating Capacity

Seating capacity is contingent upon production requirements.

Below are our basic capacities:

Balcony (Upper Level)	641
Riser (Temporary)	950
Rounds	1,000
Classroom Style	1,326
Boxing	2,900
Theater Style	3,200



Spotlights

The Ballroom has two (2) Lyceum Xenon 2000 watt Super Troupers, located in the projection room opposite the stage.

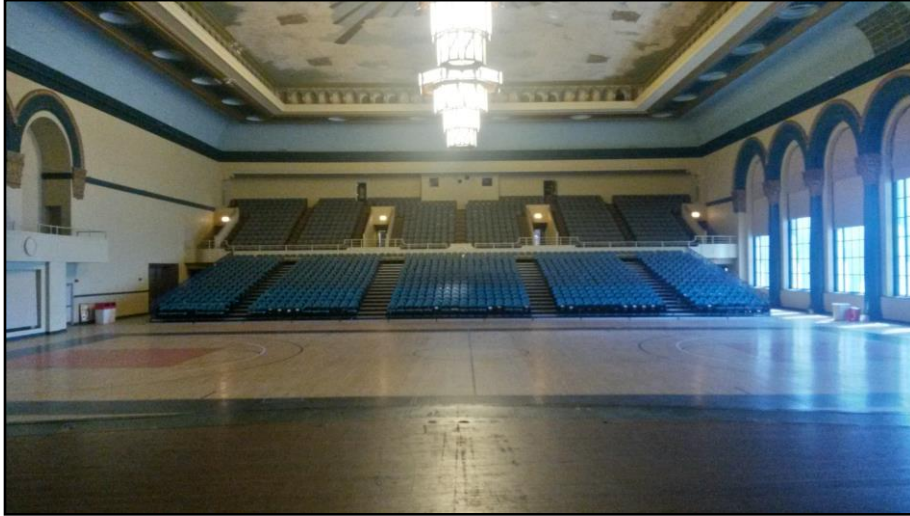
Stage Dimensions

- Proscenium Width – 48'
- Proscenium Height – 24'
- Depth – 30'
- Stage Height (From Ballroom Floor) – 40.5''

Misc Dimensions

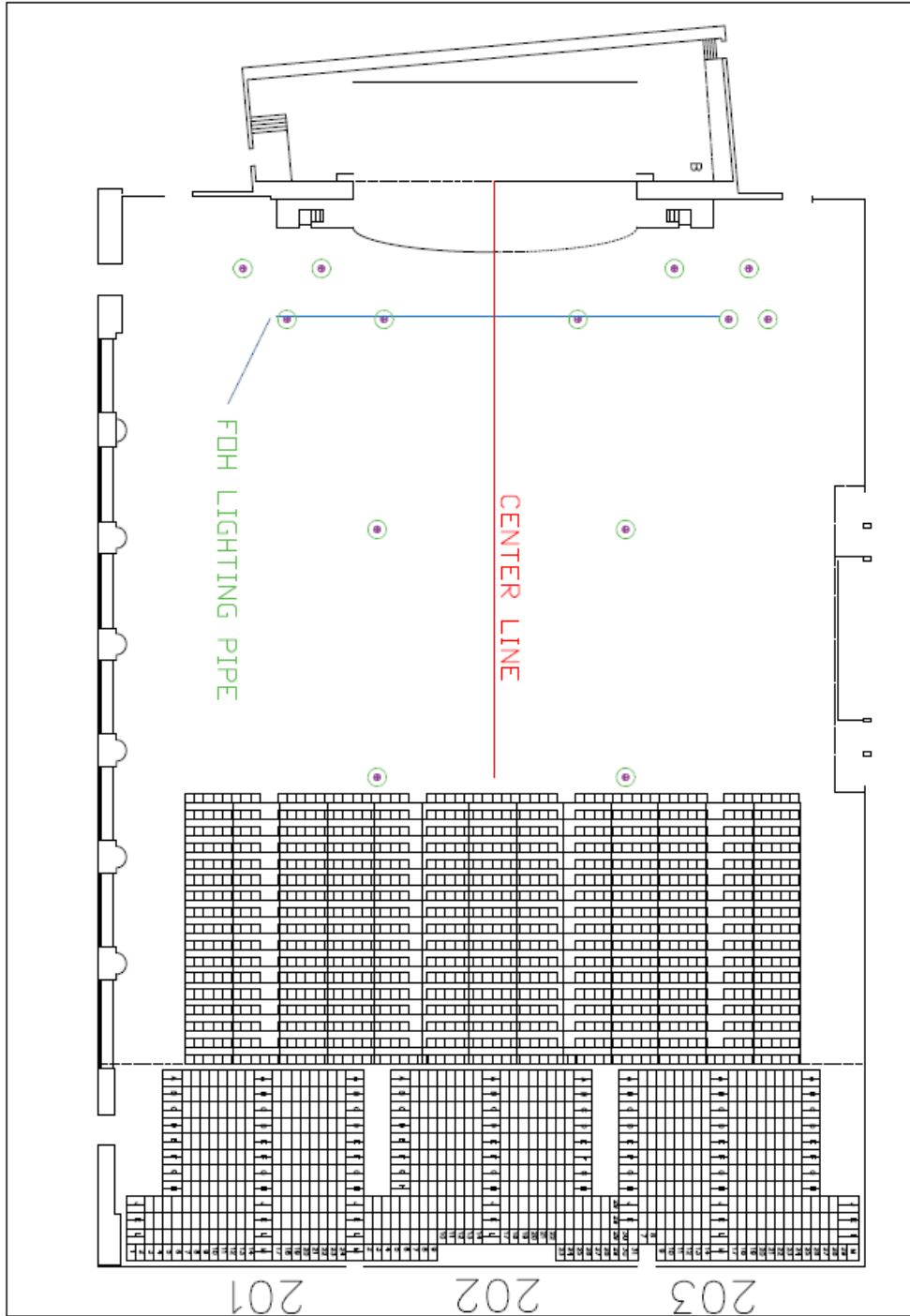
- Roll Door (Stage Right) - 9'10'' wide x 8'8'' high
- Grid Height (Inside Proscenium) – 46'
- Front Valance (From Stage Level) – 18'

- Chandelier Height (From Ballroom Floor) – 30'
- Ceiling Height (From Ballroom Floor) -55'
- Lighting Pipe Trim – 32'



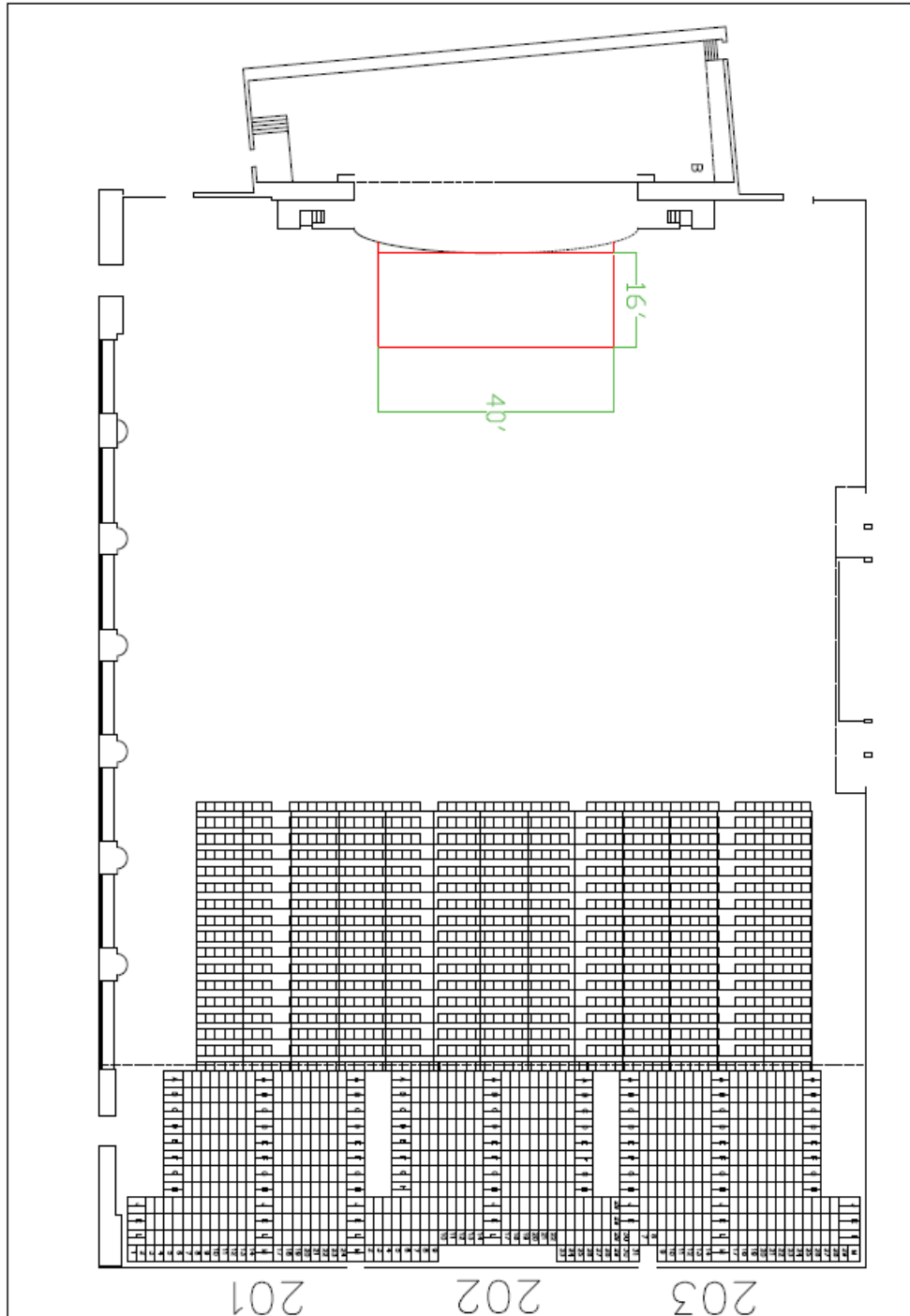
Rigging (13 house motors – all one tons)

- (4) Motors are located 2'6" off the house stage edge.
- (5) Additional motors are located 11'4" off the house stage edge – currently hangs lighting pipe
- (4) Boxing motors – (2) are located 47' off the house stage and the remaining (2) are 88' off.



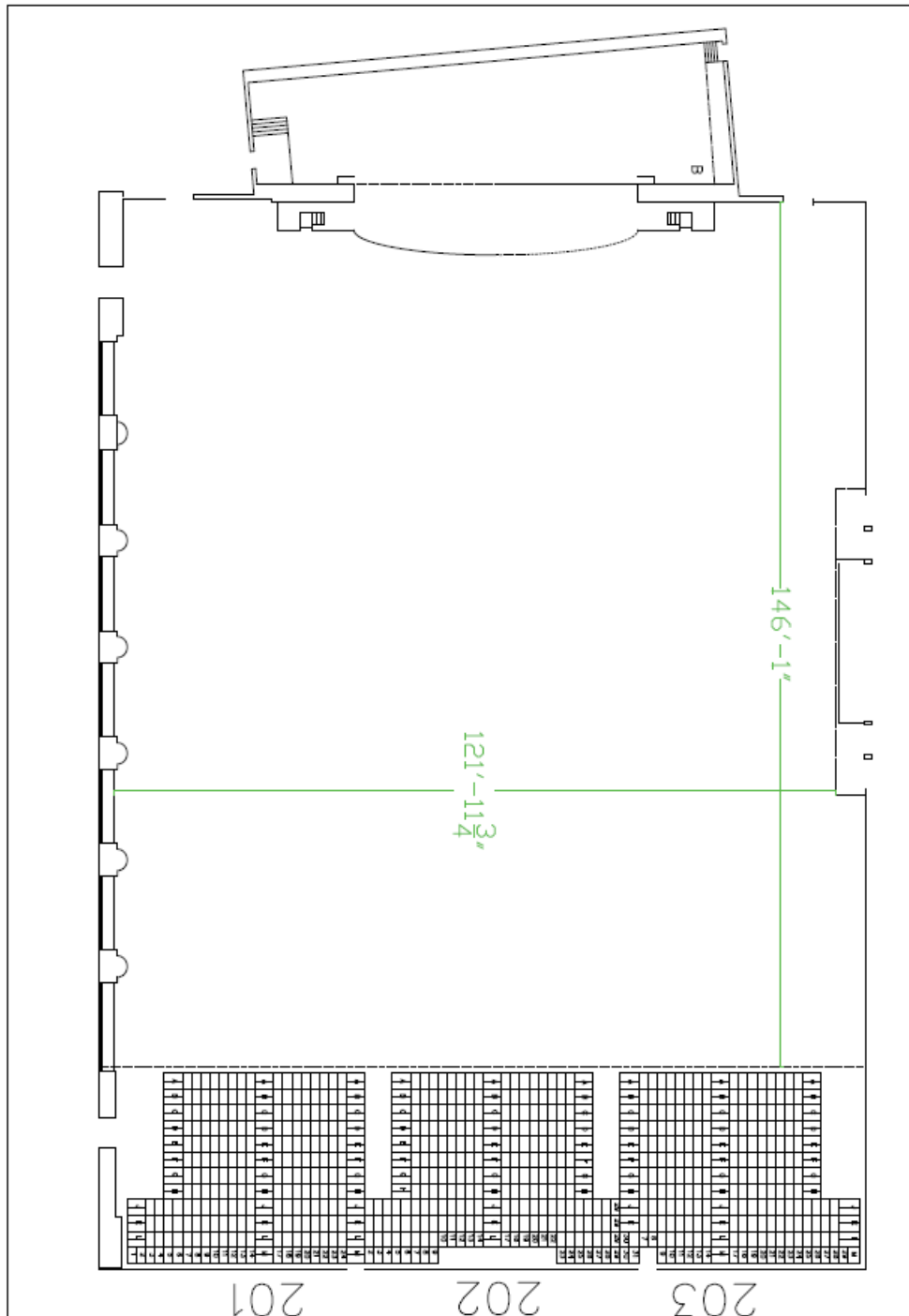
Stage Extension (Downstage)

- Capable of building an additional 48'w x 16'd temporary stage off the permanent house stage.
- Boardwalk Hall owns two stage stairs that lead from the Ballroom floor to the stage extension.



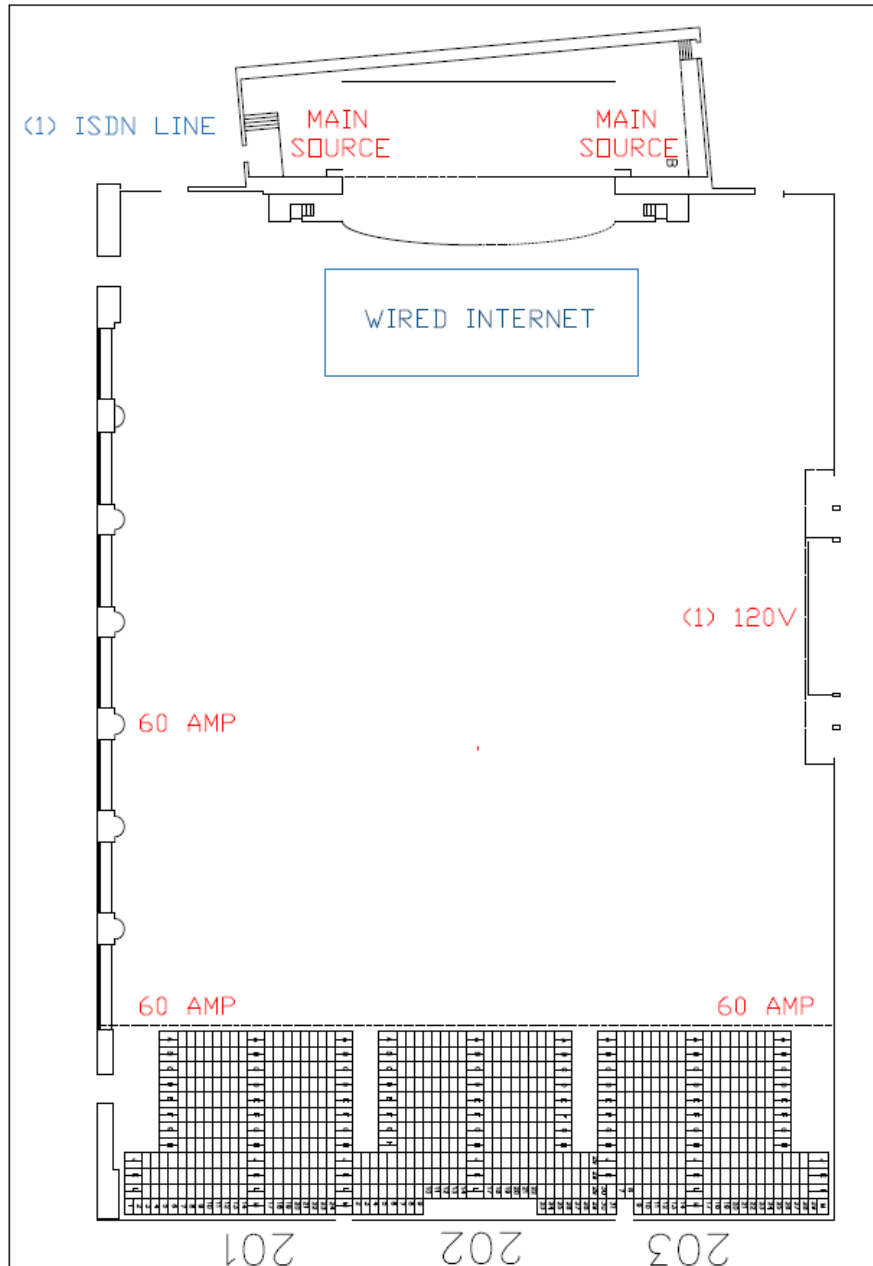
Clear Floor (146' x 122')

- Temporary riser can be removed for an open floor space of 17,800 sq. ft.



Power & IT Map

- Main power sources are located stage right and stage left.
- (1) 120v can be provided from the organ balcony (North).
- (3) 60amp tails can be provided (South & East Corners).
- ISDN line is available through the stage right corridor.
- Hardline internet is limited to the stage side of the Ballroom.
- All meeting rooms can be hardwired with internet.



Boxing/MMA Rig

- In-house trussing can be configured into a square box truss (40') or octagon for boxing and MMA events
- The boxing/MMA rig will be hung center house using the existing joists

